

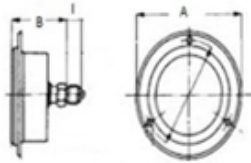


FLANGIATA DIA 100

**Manometro Attacco Flangiato
Posteriore Dia 100**

**Rear Flanged Connection Pressure
Gauge Dia 100**


Manometri per fluidi non corrosivi a temperature tra i -20
+80°C

Movimento amplificatore di precisione in ottone.

Quadrante in alluminio verniciato a forno

Elemento manometrico: - tubo Bourdon in lega di rame
per pressioni da -1 a 40 bar. - tubo a spirale in lega di
rame per pressioni da 50 a 1000 bar. Saldature in lega di
stagno.

Grado di protezione Ip 65.

Sovrappressione ammessa sui manometri standard. -

Statica: 3/4 - Fluttuante: 2/3 del valore di fondo scala
del manometro.

Pressure gauges for non-corrosive fluids at temperatures
between -20 and +80°C

Precision amplifier movement in brass. Dial in stove-
enamelled aluminium

Pressure gauge parts: - Bourdon tube in copper alloy for
pressure ratings from -1 to 40 bar. - spiral tube in copper
alloy for pressure ratings from 50 to 1000 bar.

Protection degree Ip 65

Overpressure permitted on standard gauges. - Steady:

3/4 - Fluctuating: 2/3 of full scale value of the gauge.

	Quantità	codice	SCALA		A		B		I		NOTE
			[psi]	[bar]	[in]	[mm]	[in]	[mm]	[in]	[mm]	
	<input type="text"/>	79AF10001	14,5	1	5,20	132	1,97	50	0,16	4	
	<input type="text"/>	79AF100016	23,2	1,6	5,20	132	1,97	50	0,16	4	
	<input type="text"/>	79AF10002	36,3	2,5	5,20	132	1,97	50	0,16	4	
	<input type="text"/>	79AF10004	58,0	4	5,20	132	1,97	50	0,16	4	
	<input type="text"/>	79AF10006	87,0	6	5,20	132	1,97	50	0,16	4	
	<input type="text"/>	79AF10010	145,0	10	5,20	132	1,97	50	0,16	4	
	<input type="text"/>	79AF10016	232,1	16	5,20	132	1,97	50	0,16	4	
	<input type="text"/>	79AF10025	362,6	25	5,20	132	1,97	50	0,16	4	
	<input type="text"/>	79AF10060	870,2	60	5,20	132	1,97	50	0,16	4	
	<input type="text"/>	79AF10100	1450,4	100	5,20	132	1,97	50	0,16	4	
	<input type="text"/>	79AF10160	2320,6	160	5,20	132	1,97	50	0,16	4	
	<input type="text"/>	79AF10250	3625,9	250	5,20	132	1,97	50	0,16	4	
	<input type="text"/>	79AF10400	5801,5	400	5,20	132	1,97	50	0,16	4	
	<input type="text"/>	79AF10600	8702,3	600	5,20	132	1,97	50	0,16	4	